



31 Holmwood Gardens, Bristol, BS9 3EB

www.hydes.co.uk



31 Holmwood Gardens, Bristol, BS9 3EB

A stunning and particularly light detached four bedroom house forming part of an exclusive development, in a quiet and convenient location within easy walking distance of Westbury on Trym village and two excellent local schools. Advantages include a private and spacious south west facing garden, double glazed windows throughout and driveway parking for four cars leading to a sizeable double garage, with automated access. The property also benefits from a notably private location within Holmwood Gardens, being one of only three houses on a cul de sac off from the main driveway to the development, within a peaceful enclave.



4



2

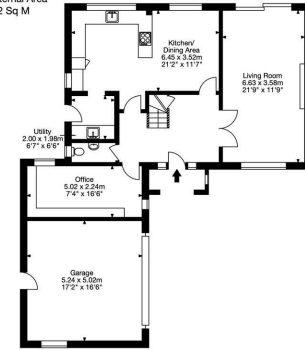


2

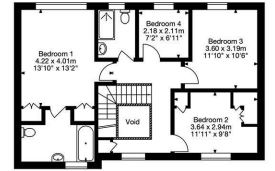


31 Holmwood Gardens
Westbury on Trym,
Bristol, BS9 3EB

Approx. Gross Internal Area
1853 Sq Ft - 172 Sq M



Ground Floor



First Floor

© Crown Copyright 2011. Ordnance Survey. All Rights Reserved. All measurements are approximate and should be taken as a guide only. Plans are the best available and do not guarantee accuracy.

Capture.





Energy Efficiency Rating		Current	Potential
Very energy efficient - lower running costs			
(92 plus) A			
(81-91) B			
(69-80) C			
(55-68) D			
(39-54) E			
(21-38) F			
(1-20) G			
Not energy efficient - higher running costs			
England & Wales		EU Directive 2002/91/EC	

Environmental Impact (CO ₂) Rating		Current	Potential
Very environmentally friendly - lower CO ₂ emissions			
(92 plus) A			
(81-91) B			
(69-80) C			
(55-68) D			
(39-54) E			
(21-38) F			
(1-20) G			
Not environmentally friendly - higher CO ₂ emissions			
England & Wales		EU Directive 2002/91/EC	

OTHER INFORMATION



28 Princess Victoria Street, Bristol, BS8 4BU
 Tel: 0117 973 1516
 post@hydes.co.uk | www.hydes.co.uk

IMPORTANT NOTE

Hydes Of Bristol and any joint agents give notice that (i) they have no authority to make or give representations or warranties in relation to the property. These particulars do not form part of any offer or contract and must not be relied upon as statements or representations of fact. (ii) Any areas, distances or measurements are approximate. The text, photographs and plans are for guidance only and are not necessarily comprehensive. It should not be assumed that the property has all the necessary planning, building regulations or other consents and Hydes Of Bristol have not tested any services, equipment or facilities. Purchasers must satisfy themselves by inspection or otherwise. (iii) In accordance with the consumer protection from unfair trading regulations, please note that the working condition of these services, or kitchen appliances has not been checked by the Agents but at the time of taking particulars we were informed that all were in working order. Please also note that current government legislation demands that as selling agents for this property, Hydes Of Bristol require written evidence of the origin/source of finance for funding for any prospective purchaser wishing to purchase this property. This confirmation shall be required prior to the vendor entering into any contract of sale and our instructions from the vendor are to this effect.